

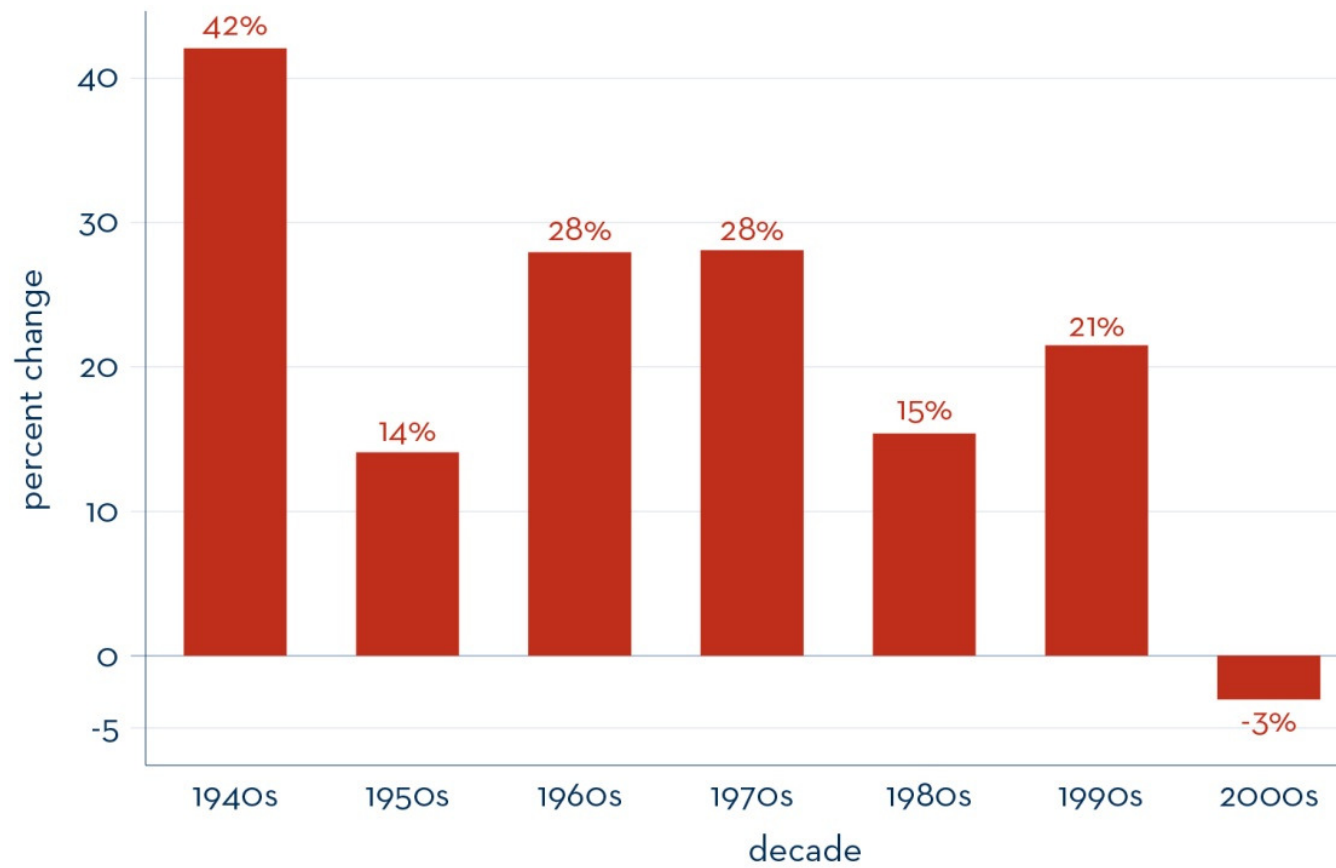
Wisconsin Jobs and the Economy: What's going on?

Laura Dresser
Center on Wisconsin Strategy cows.org

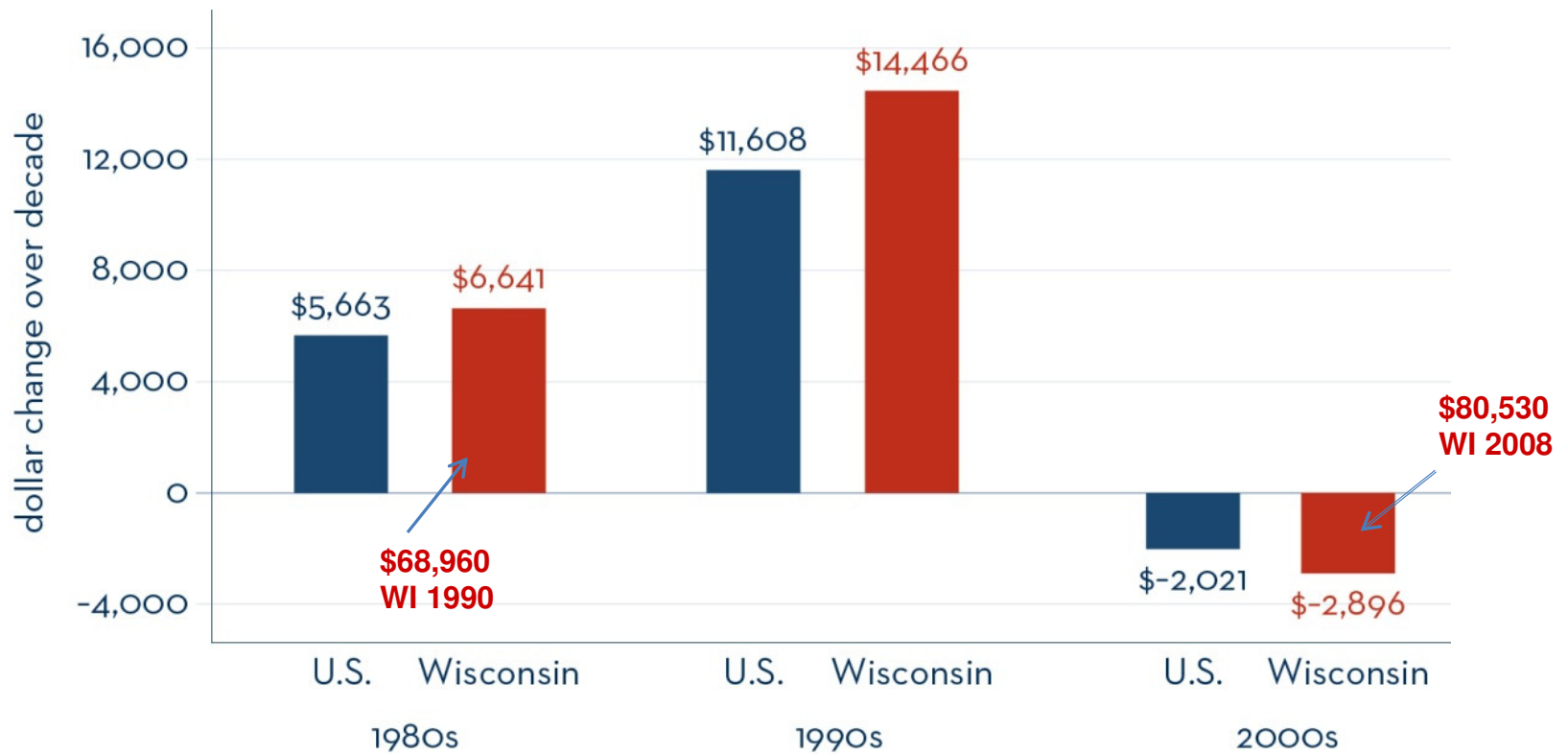
Oct 8, 2011

LOST DECADE

Change in Non-Farm Employment in Wisconsin, By Decade



Change in Real Four-Person Family Income, Wisconsin and U.S., By Decade (2008 dollars)

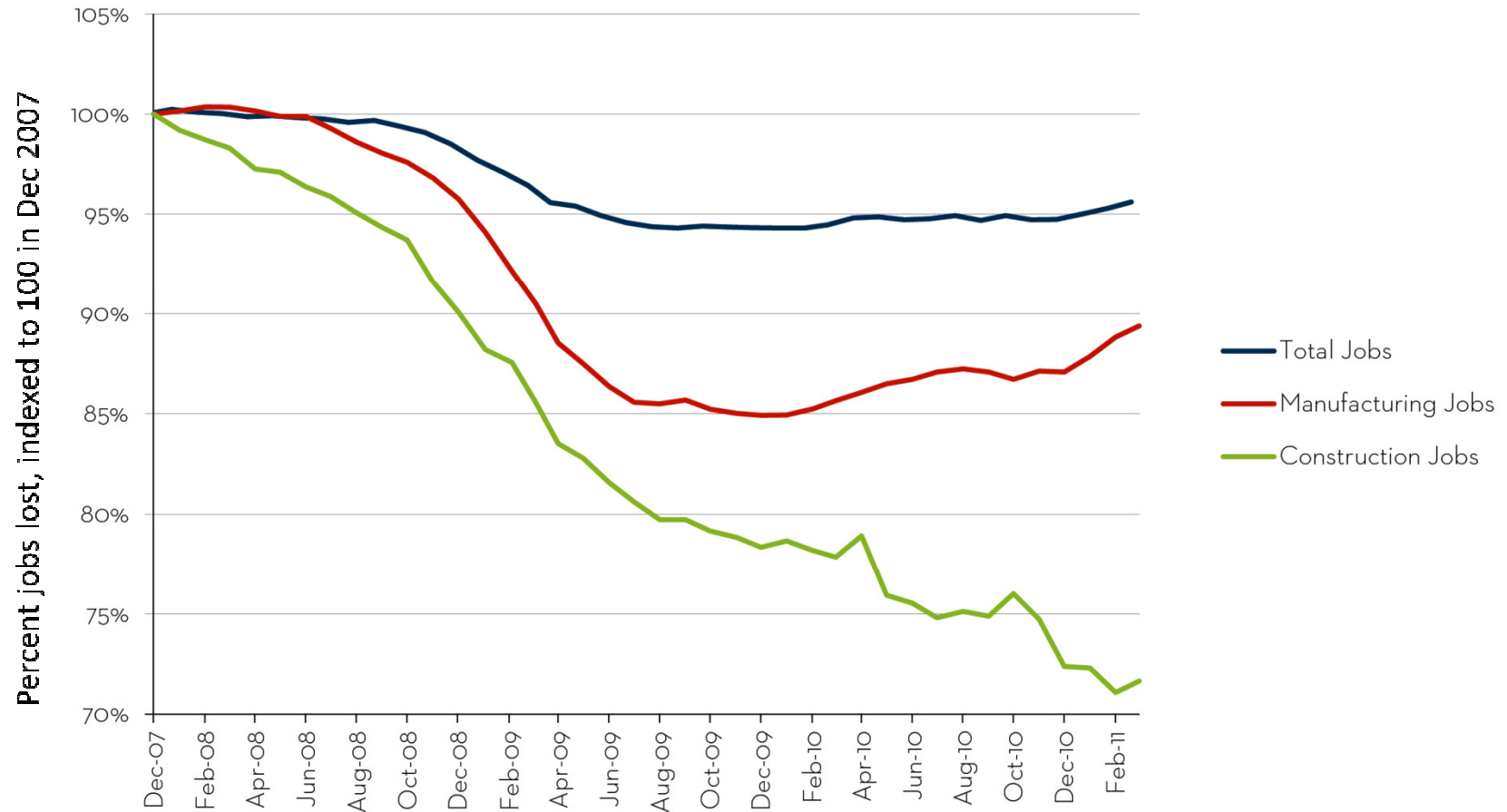


THE GREAT RECESSION

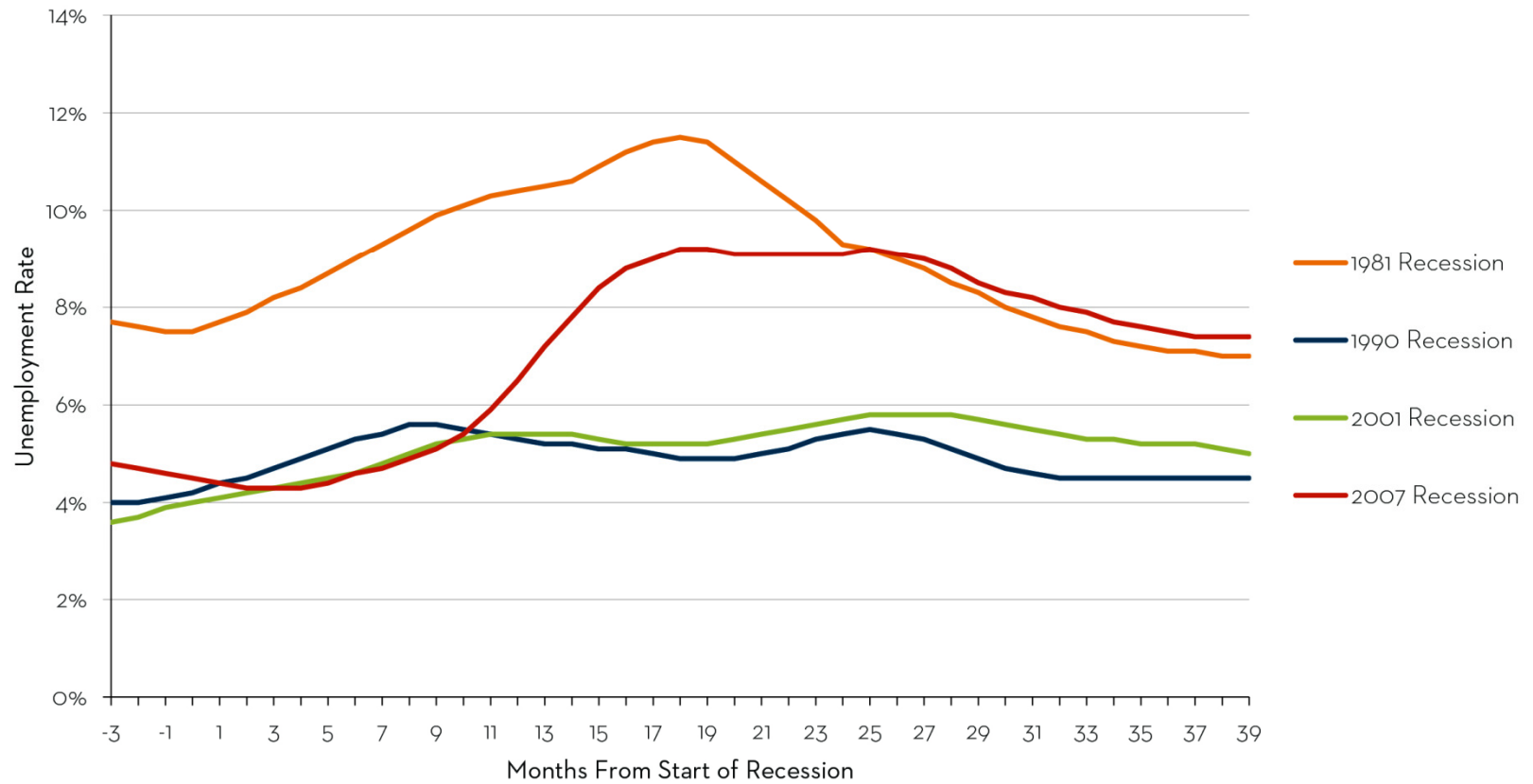
A Giant Jobs Gap



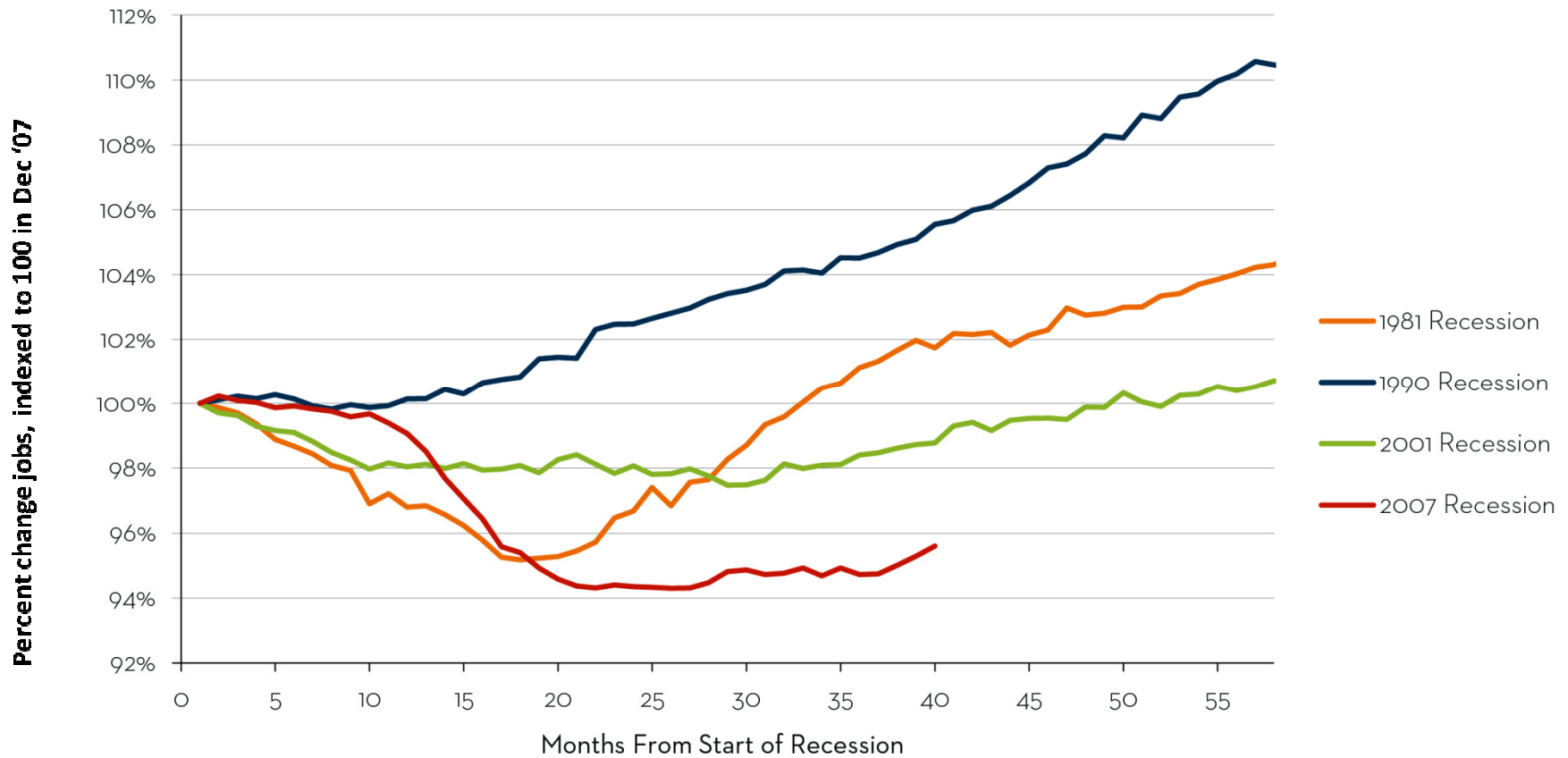
WI Job Loss: MFG and Construction Both Down, Diverging in Recovery



Unemployment, Last Four Recessions



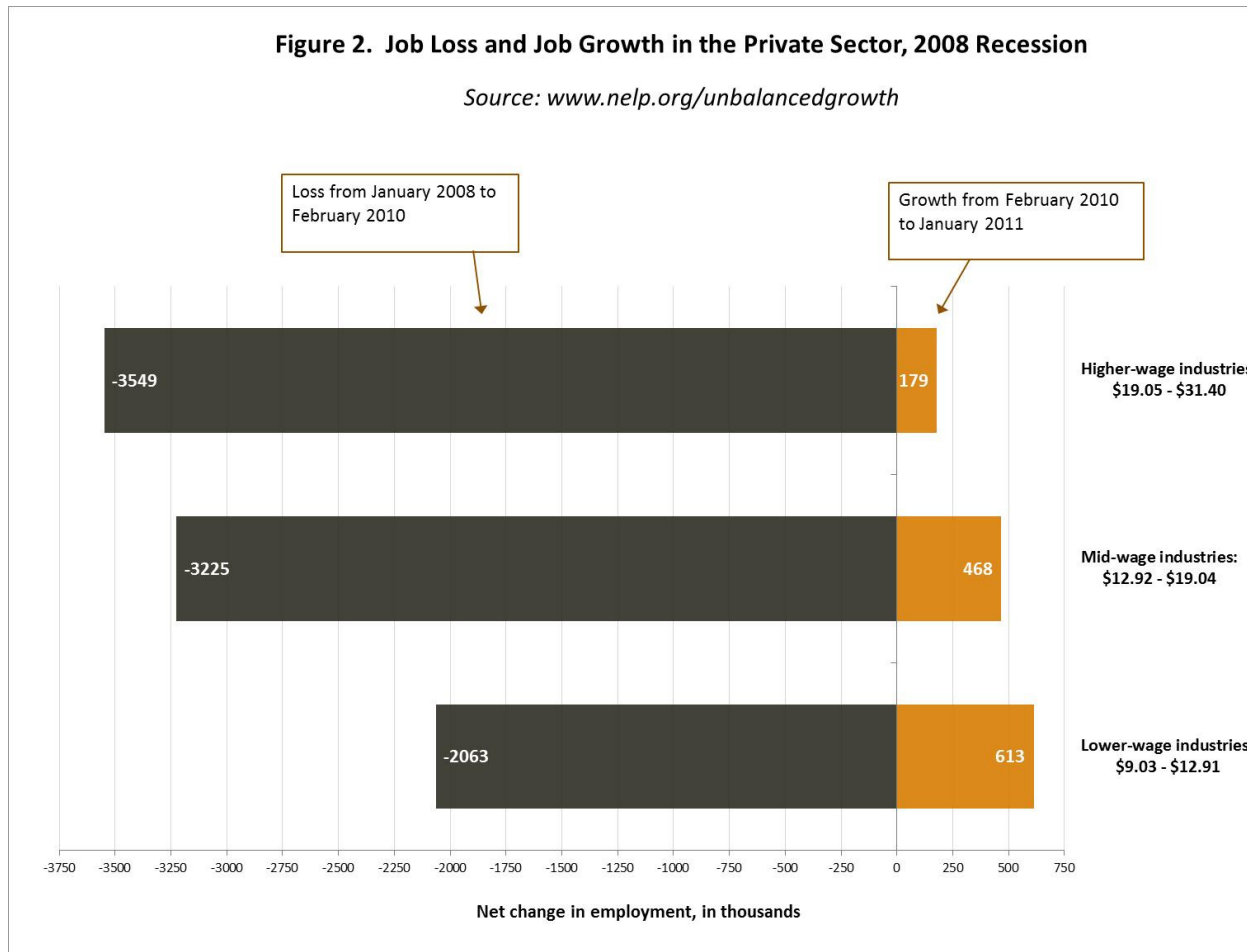
A Long Recession, A Weak Recovery



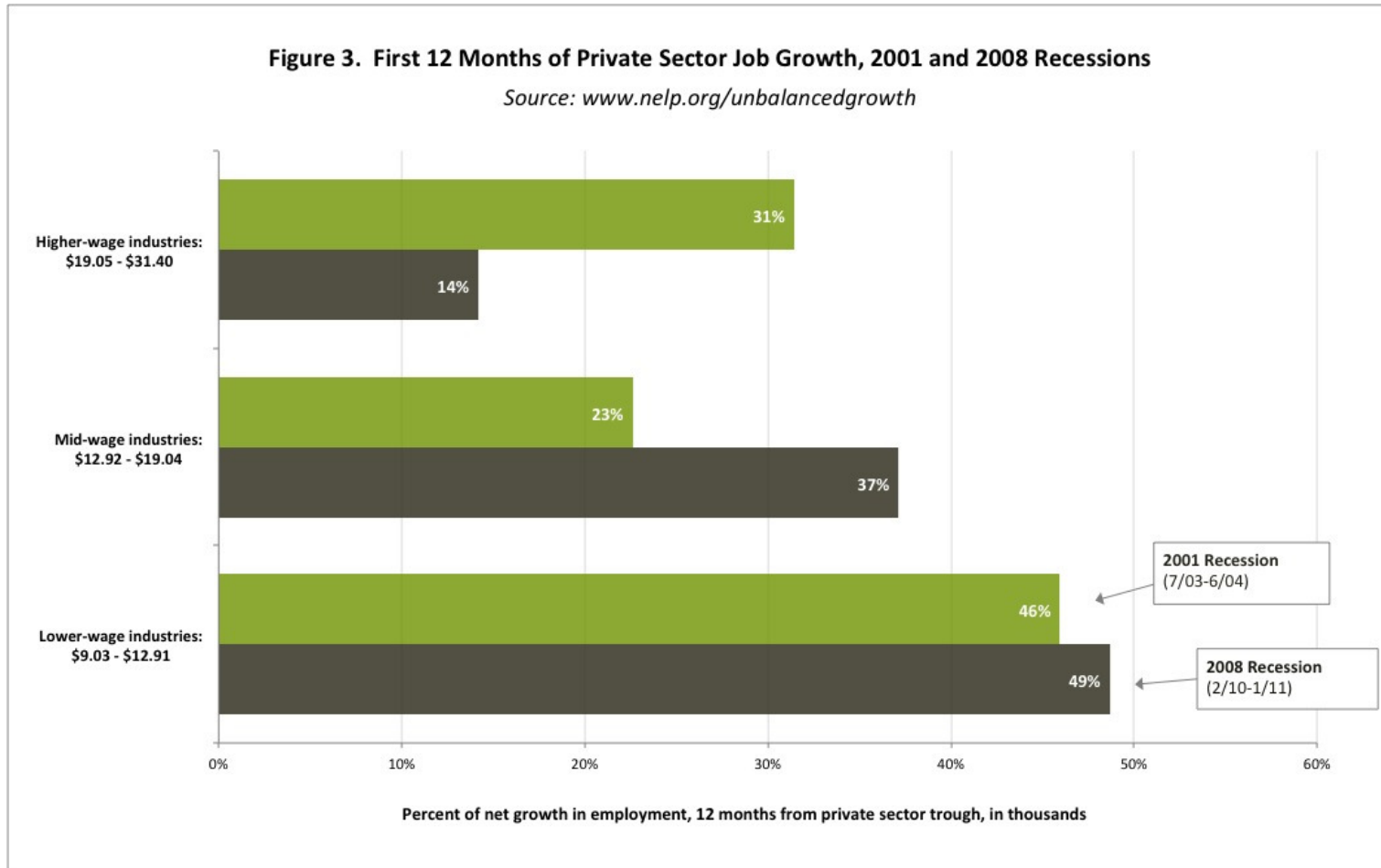
National Decline in Job Quality Over Recession and Recovery

Figure 2. Job Loss and Job Growth in the Private Sector, 2008 Recession

Source: www.nelp.org/unbalancedgrowth

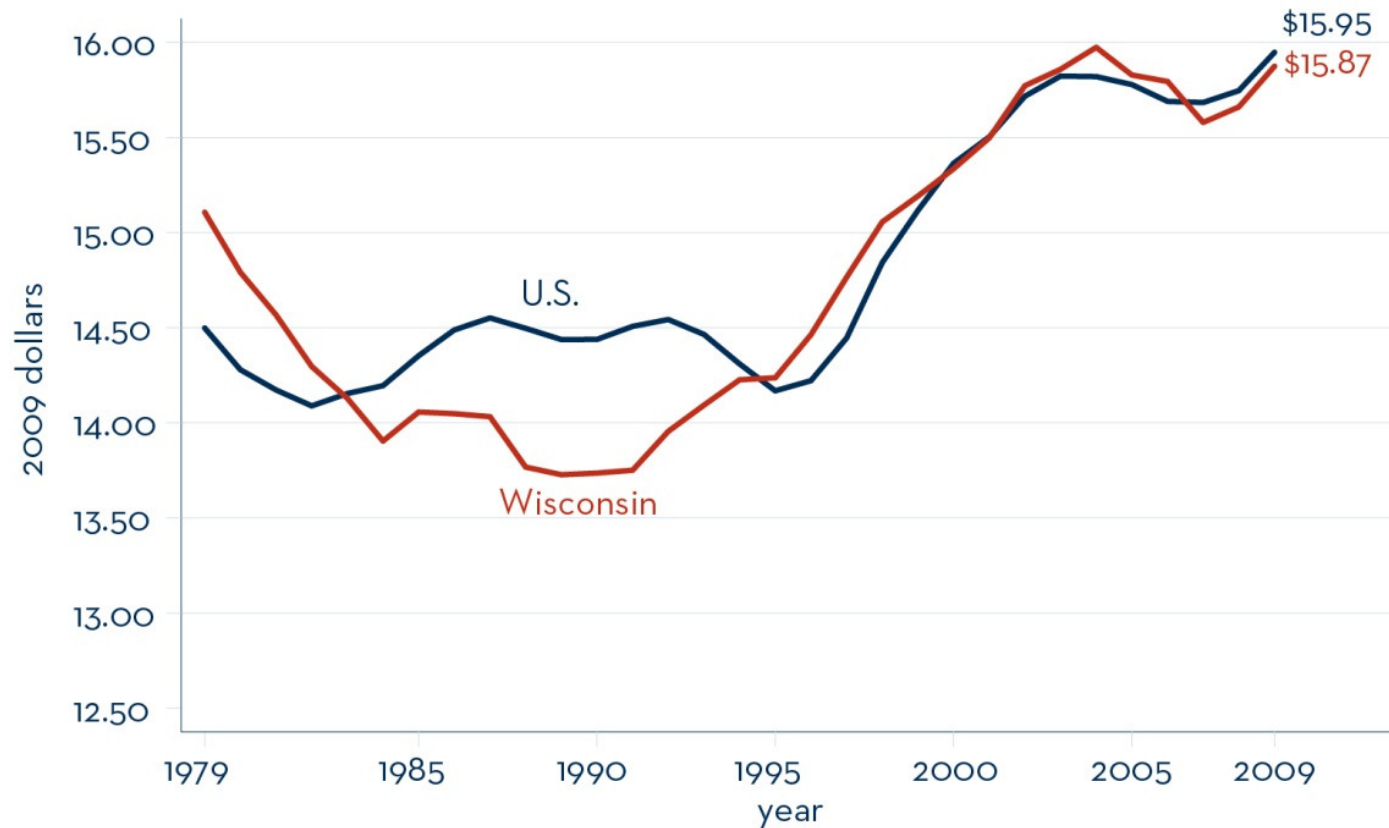


National Recovery Generating Few Good Jobs

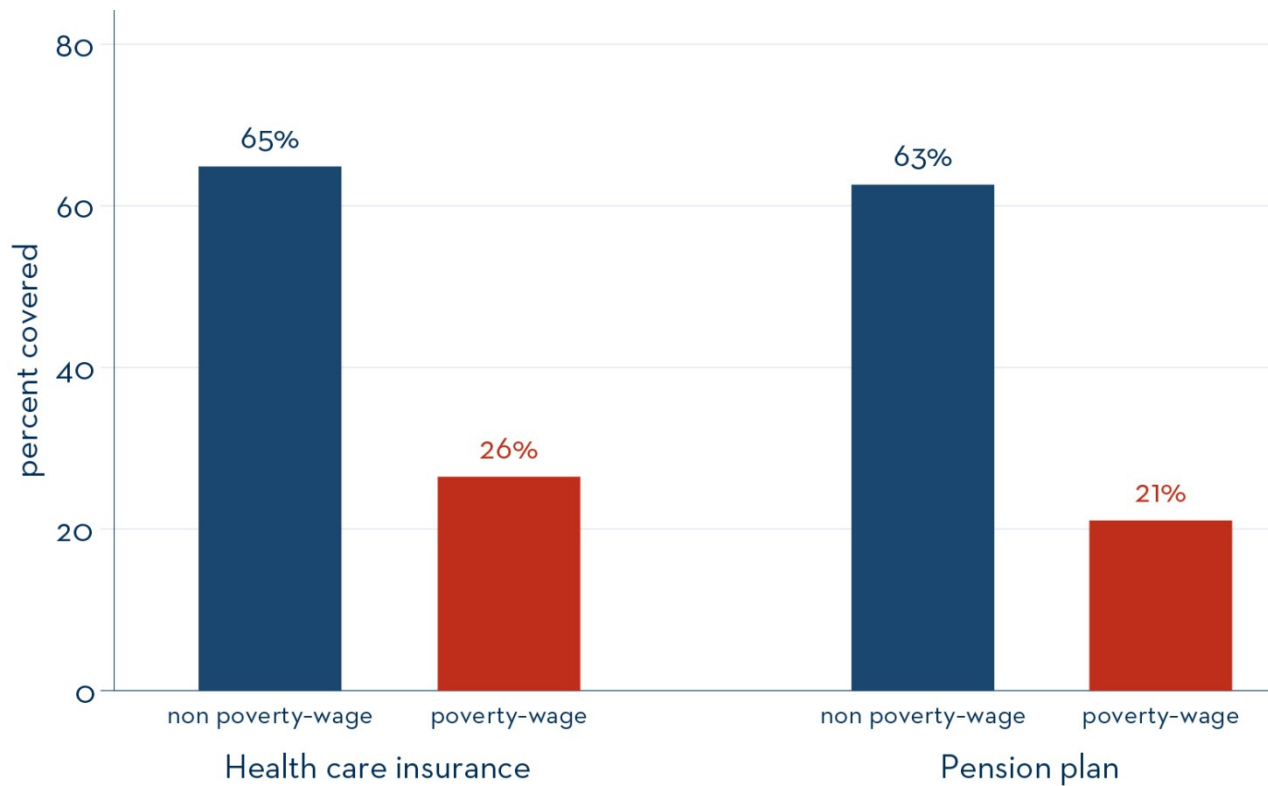


SHORT TERM CYCLICAL PROBLEM ON TOP OF LONG
TERM SHIFTS

Median Hourly Wages, Wisconsin and U.S., 1979-2009 (2009 dollars)



Poverty-Wage Workers Get Few Benefits



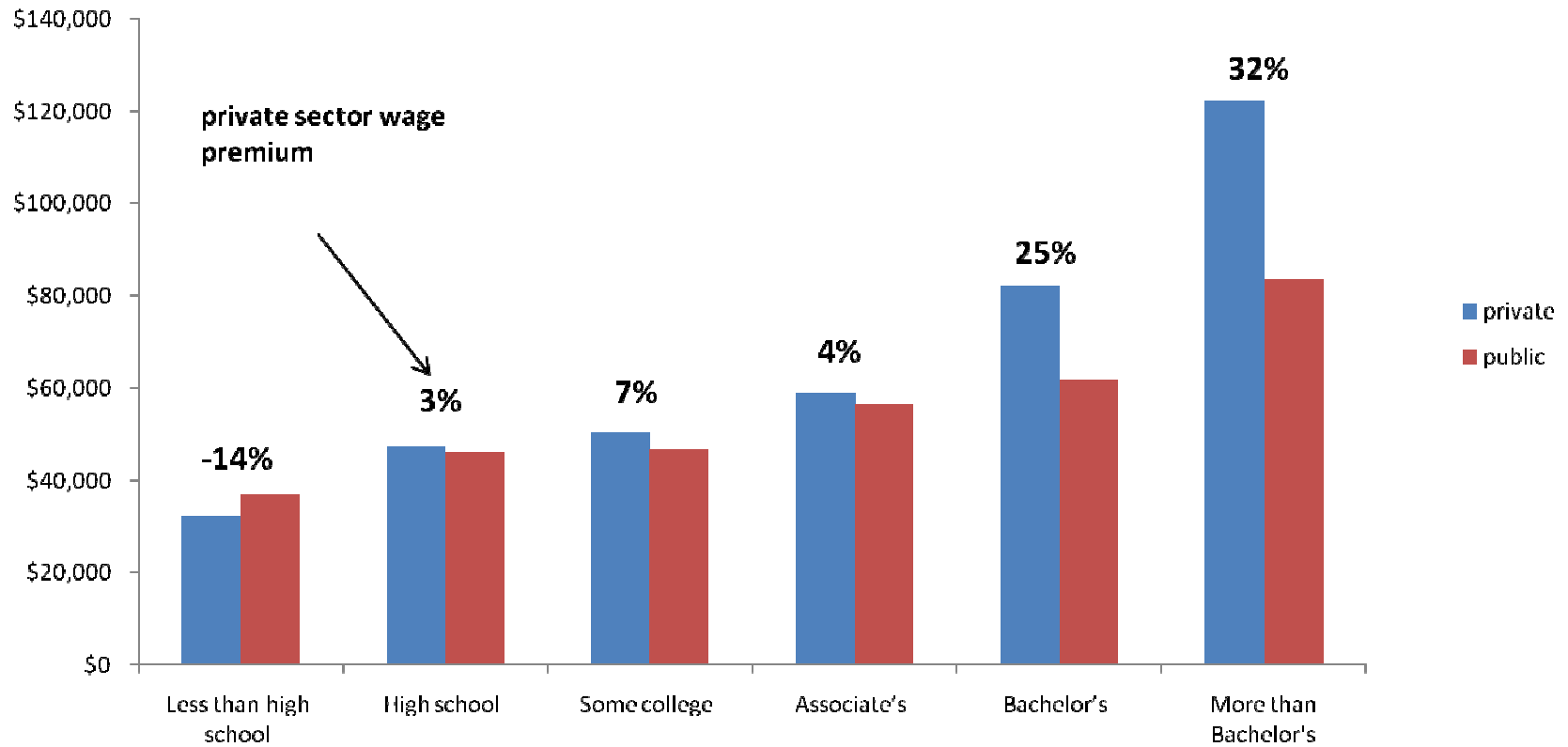
Poverty Wage = \$10.46 per hour or less, 2009

Living in the cross hairs:

**WHAT ABOUT THE STATE BUDGET AND PUBLIC
SECTOR WORKERS?**

Not Overpaid:

Total compensation by education level in public and private sectors



Source: Keefe/EPI (2011)

Not Bloated:

Public Sector Workforce Wisconsin, 2009

	Number of workers	As % of total employees	per 1000 state residents
Full-Time equiv. Public workers	284,963	100.0%	50.39
State Government employees	70,457	24.7%	12.46
Local Government employees	214,506	75.3%	37.93
Actual Full Time employees	238,534	62.3%	42.18
Actual Part Time employees	144,247	37.7%	25.51
Work in education (Elementary, secondary, and higher education combined)	164,128	57.6%	
In elementary or secondary schools	117,316	41.2%	
Higher education	45,726	16.0%	
Police / Fire department	20,672	7.3%	
Legal Corrections	14,734	5.2%	
Public welfare	14,573	5.1%	
Health & Hospitals	12,699	4.5%	
Financial and Other Govt. Administration	13,021	4.6%	
Judicial and Legal	5,806	2.0%	
Highways	10,634	3.7%	
Other	28,696	10.1%	



8th lowest ratio
in the nation

The Less You Earn, The More You Lose:

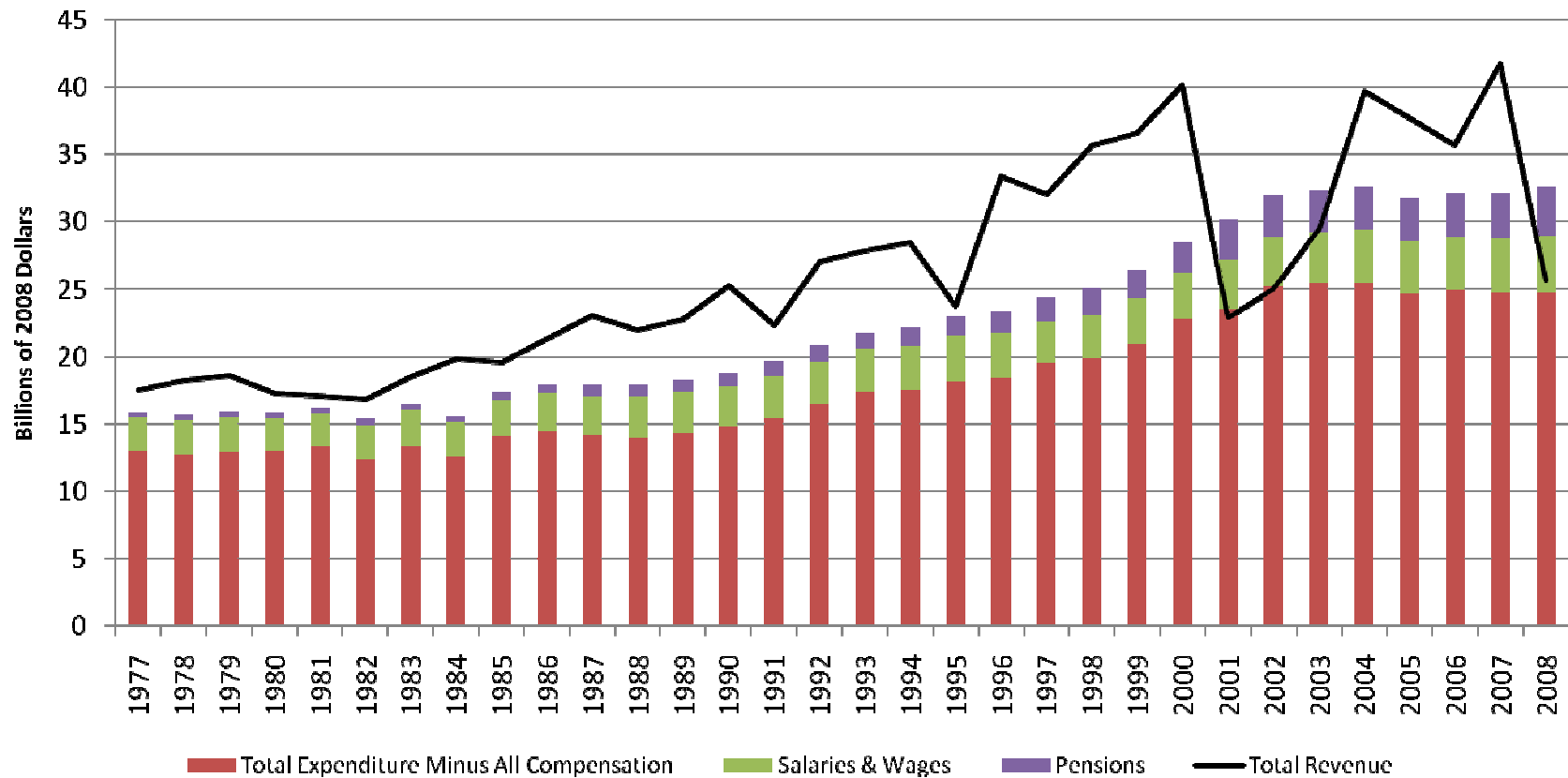
The Income Effect of the Budget Repair Bill

Effects of the Budget Repair Bill on Income, three public workers in Wisconsin

	Custodian, full time	Teacher, full time, 5 years teaching	Professor, full time
Annual Salary	\$11.83/hour	\$39,732	\$75,885
Monthly Gross Salary	\$919 bi-weekly	\$3,433	\$8,432
Current Health Insurance Deduction	\$78	\$0 *	\$89
Health Insurance deduction under Budget Repair Bill	\$208	\$145 *	\$208
Current WRS Contribution	\$2	\$0 *	\$17
WRS Contribution under Budget Repair Bill	\$53	\$192	\$489
All other deductions	\$223	\$972	\$182
Current Take Home Salary	\$616	\$2,461	\$8,144
Take Home Salary under Budget "Repair" Bill	\$453	\$2,124	\$7,553
Monthly Difference	\$181	\$337	\$591
Percent Difference	in first 29.0% paycheck	13.0%	7.2%

It is a Revenue Problem: Blame Wall Street for the Deficit

WI Revenue and Expenditures



Source: COWS analysis of Tax Policy Center/Census of Gov data.